

Whitepost PERFECT ADAPTATION

TO THE CANAL.
TO YOUR TECHNIQUE.
AND TO YOU.



Whitepost

Fiberglass posts.

Available in 7 sizes and in two versions: DC and DC-E, the posts present characteristics that make them excellent options to functional and aesthetic reestablishment of anterior and posterior teeth.

WHITEPOST DRILL



High fracture resistance.^{2,3}

Modulus of elasticity similar to dentin², which makes fiberglass posts safer than metallic posts.⁴

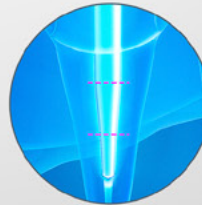
Pre-silanized surface: retention equivalent to serrated posts¹ even without any macro retentions (fragile zones).



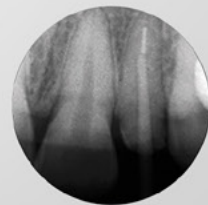
Excellent translucency: high esthetic capacity.



Light conductivity: helps with light curing of cements.



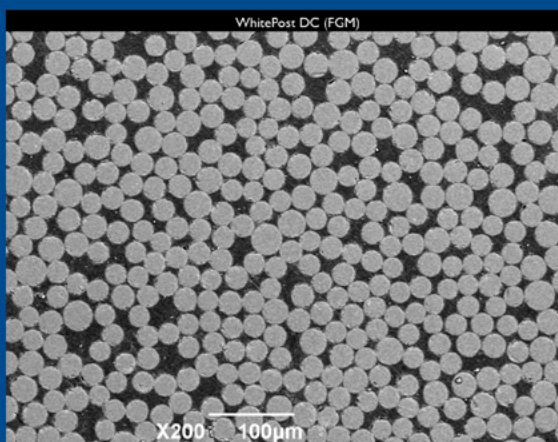
Double tapered: allows for better adaptation to the conduit without further abrading the internal structure of the tooth.



Radiopacity.

MICROPHOTOGRAPH OF WHITEPOST

Microphotograph with 200X approximation of the transverse section of the Whitepost DC (FGM) posts showing the resinous matrix free of air bubbles.



“

The best relation between preparation and adaptation. Total trust for over 15 years. ”

Dr. Marcelo Alves.

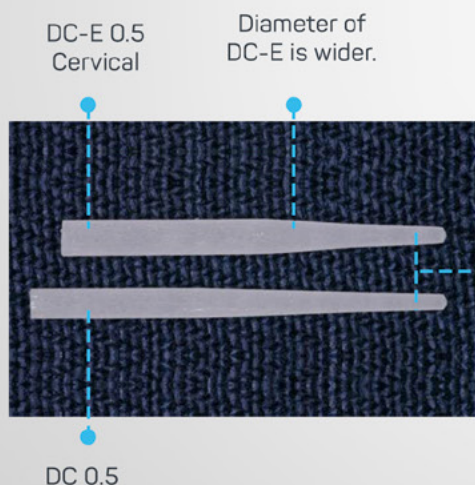


Image: Courtesy of prof. Guilherme Carpena Lopes - Federal University of Santa Catarina (Brazil).

Image: Courtesy of dr. Marcelo Alves.

DIFFERENCES BETWEEN DC AND DC-E

The DC-E version (Special) has the same apical diameter than its corresponding DC version, but on the cervical third it shows a wider diameter that makes it the best choice for cases where there is less quantity of remaining coronal structure and for teeth with wide root conduits.



DC-E 1

DC 1

Both posts have the same apical diameter as the corresponding size (DC 0.5 and DC-E 0.5).

PRESENTATION

CONTENT

KIT WHITEPOST DC
DC 0.5, DC 1, DC 2,
DC 3 E DC-E 2

5 posts of each size
(total of 25 posts) +
their respective drills +
template for post selection

KIT INTRO WHITEPOST DC
DC 0.5, DC 1, DC 2, DC 3

5 posts of the same size +
their respective drill

REFILL WHITEPOST DC
DC 0.5, DC 1, DC 2, DC 3

5 posts of the
same size



PRESENTATION

CONTENT

KIT WHITEPOST DC-E
DC 0.5, DC-E 0.5, DC 1,
DC-E 1 E DC-E 2

5 posts of each size
(total of 25 posts) +
their respective drills +
template for post selection

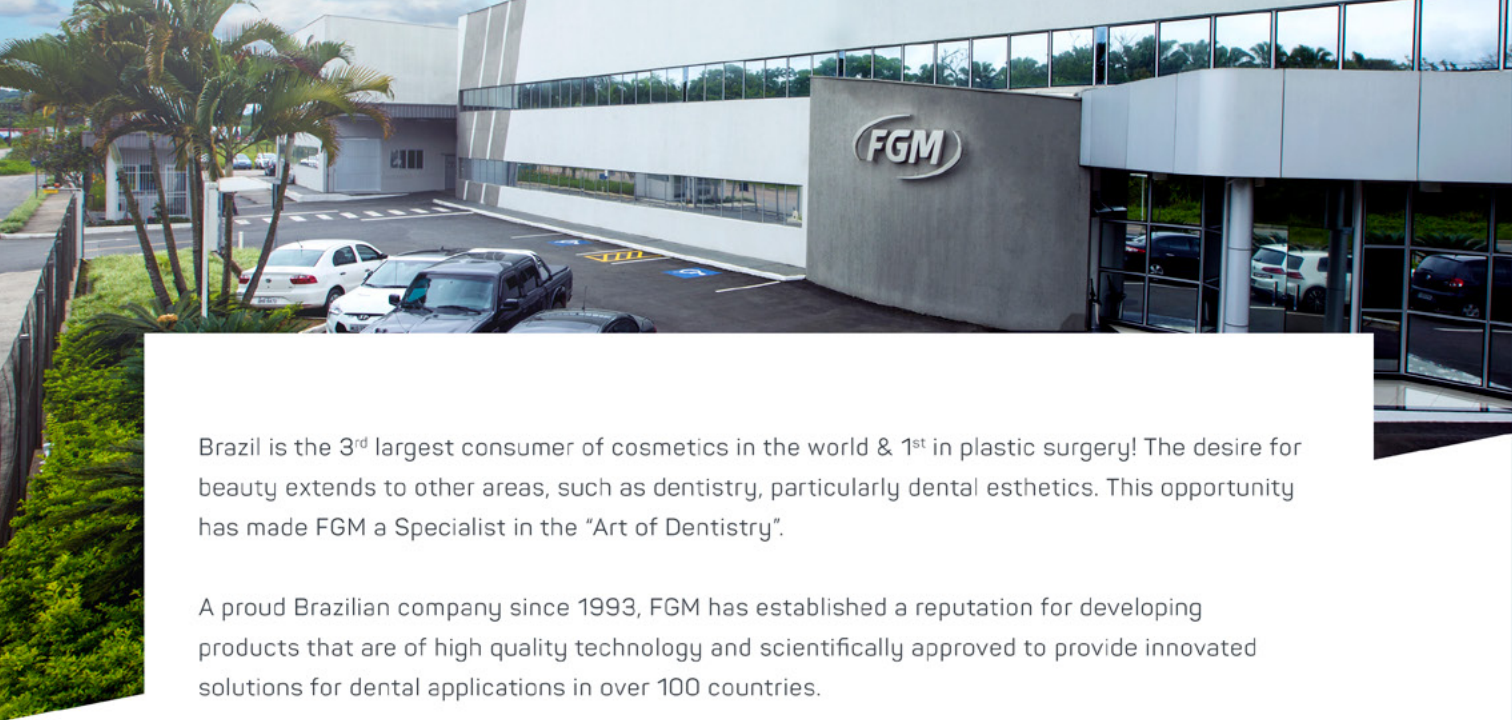
KIT INTRO WHITEPOST DC-E
DC-E 0.5, DC-E 1 E DC-E 2

5 posts of the same size +
their respective drill

REFIL WHITEPOST DC-E
DC-E 0.5, DC-E 1 E DC-E 2

5 posts of the
same size





Brazil is the 3rd largest consumer of cosmetics in the world & 1st in plastic surgery! The desire for beauty extends to other areas, such as dentistry, particularly dental esthetics. This opportunity has made FGM a Specialist in the "Art of Dentistry".

A proud Brazilian company since 1993, FGM has established a reputation for developing products that are of high quality technology and scientifically approved to provide innovated solutions for dental applications in over 100 countries.

FGM is a pioneer in manufacturing and a leader in dental whitening sales for Brazil & Latin America. FGM is presently a reference point in the national & international dental market with over 300 published articles.

To help the brand earn the dentist trust, FGM focuses on research & development while maintaining close relationships with respected universities and renowned research centers around the world.

FGM's guarantee is to always keep the well-being of the patient in mind, providing highly effective products that produce excellent results with a wide range of different type of materials.

85%

of market
share in Brazil.

25+

years in
the market.

#1

Leader in Brazil
and Latin America.

100+

presently in over
100 countries.



Learn more about
Esthetic Dentistry.

BUSINESS DEVELOPMENT:

Robert Noble - (760) 519 7771

robert.noble@fgm.ind.br



www.fgmus.com



www.fgm.ind.br/studygroup



FGM Dental Products

